

Dentium Advanced Sinus Kit



DASK

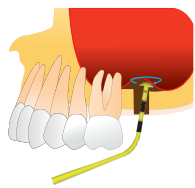
CATALOG & MANUAL

Dentium Advanced Sinus Kit

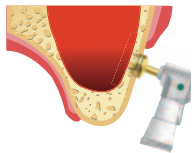
C O N T E N T S



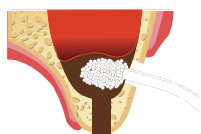
Introduction of DASK



Crestal Approach



Lateral Approach



OSTEON™ Sinus & Lifting

Introduction of DASK

Drills for Crestal Approach



DASK Drill #1
XRT332035

DASK Drill #2
XRT372035

The distance from the alveolar crest to the sinus floor should be measured on x-rays prior to surgery. Site preparation is performed with twist drills in sequence up to 1mm short of the sinus floor. Then **DASK Drill #1 or #2** is used and the sinus floor is carefully approached under light apical pressure. When you feel the sinus floor yields, remove the drill. Or, partial preparations with DASK Drill #1 or #2 and up-fracture with osteotomes can be performed.

(800~1200rpm)

* The internal irrigation not only provides a cooling effect, but also adds hydraulic pressure to slightly lift the sinus membrane during drilling.



DASK Drill #3
XED331035D

When the sinus cavity is accessed, **DASK Drill #3** is introduced and a much broader detachment from the sinus floor can be facilitated horizontally with hydraulic pressure thanks to the internal irrigation hole. **DASK Drill #3** can also be used for a lateral window approach.

(800~1200rpm)

Drills for Lateral Approach



DASK Drill #4
XRT064025

DASK Drill #5
XRT084025

To make a lateral window through the antrostomy(thin-out) approach.

(800~1200rpm)

* DASK Drill #4 or #5 is used to prepare a lateral sinus window using light pressure and rotating strokes. The DASK Drill #4 or #5 is designed to minimize the risk of sinus membrane perforation.



DASK Drill #6
XST083025

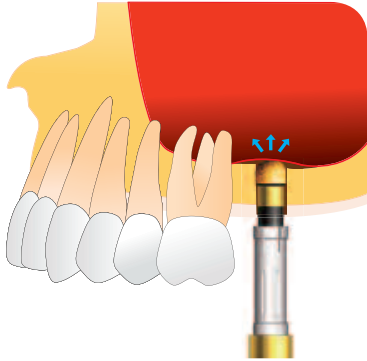
To make a lateral window through the wall-off technique.

(800~1200rpm)

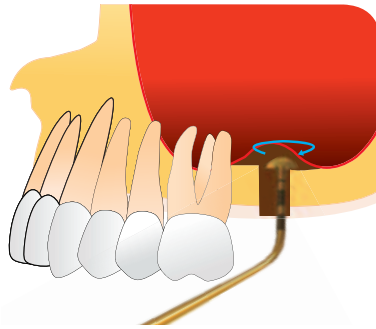
* DASK Drill #6 is used to cut and detach a bony island like a trephine bur from the lateral wall. Uncontrolled overdrilling may lead to sinus perforation and possible damage to the membrane. External irrigation is necessary when drilling.

Crestal Approach (Sinus Lifting)

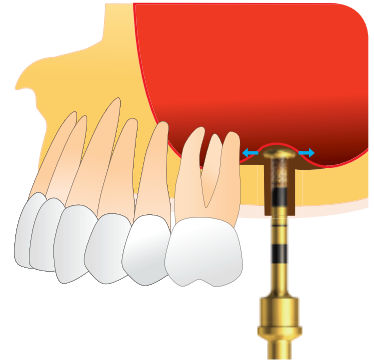
Thin-out Technique



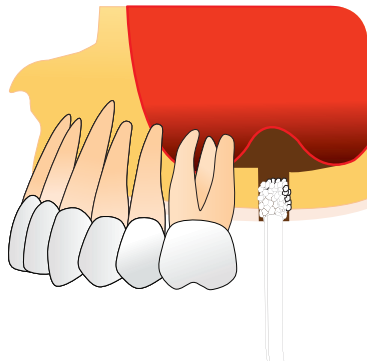
After Ø3.8 Final drilling, eliminate the residual bone (1mm) using a **DASK Drill #1 or #2**. (in hard bone) until you feel a slight drop.



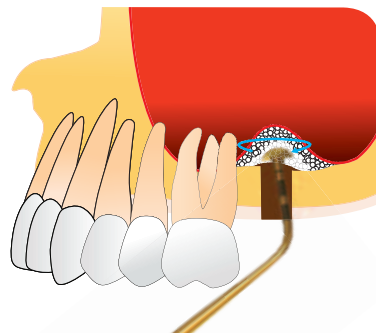
Use the dome-shaped sinus curette to gently lift the sinus membrane.



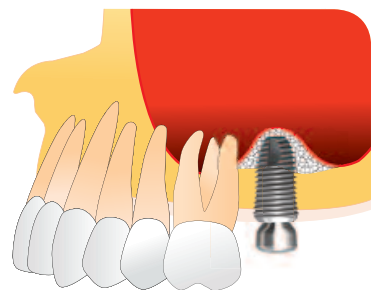
Detach the sinus membrane using a **DASK Drill #3** with internal irrigation.



Use (OSTEON™ Lifting) bone graft material to fill the sinus through the osteotomy.

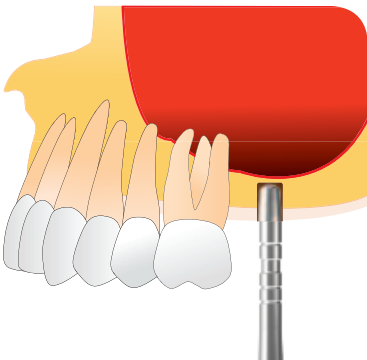


Fill and distribute OSTEON™ properly into the created space.

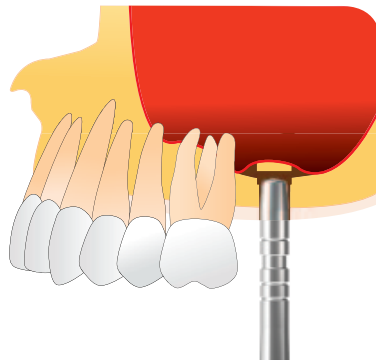


Placement of implant into the osteotomy.

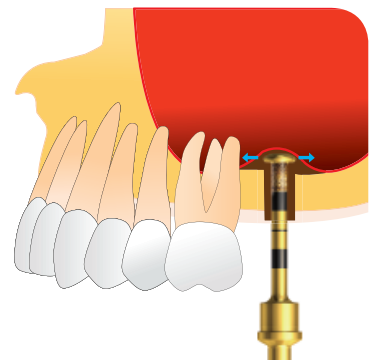
Osteotome Technique



After drilling, use an osteotome.



Use an osteotome to make a greenstick fracture.



Use a dome-shaped sinus curette to gently lift the sinus membrane.

Clinical Case

Crestal Approach



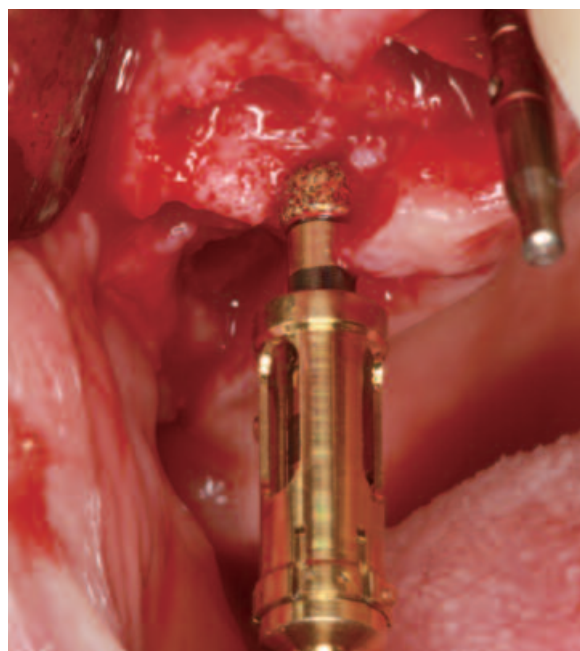
Preoperative panoramic view
:Due to caries, elongation and tilt, tooth 15 and 16 have to be extracted



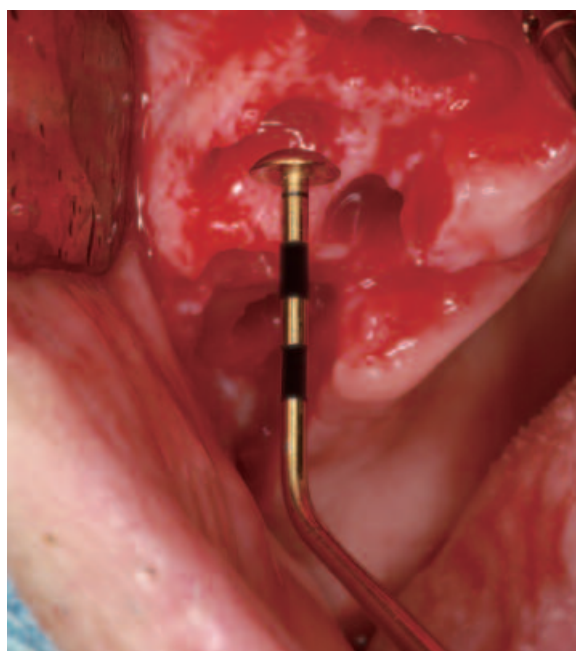
Postoperative panoramic view



Finally prosthesis in situ (Zirconia ceramic bridge).



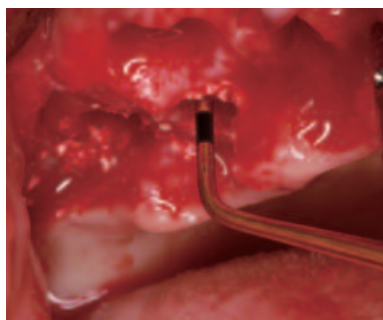
DASK Drill #1 with a depth stopper to thin out the cortical bone of sinus floor



A dome-shaped sinus curette is introduced to detach the schneiderian membrane from the sinus floor



Bone graft material (OSTEON™ Lifting) is filled into the created space



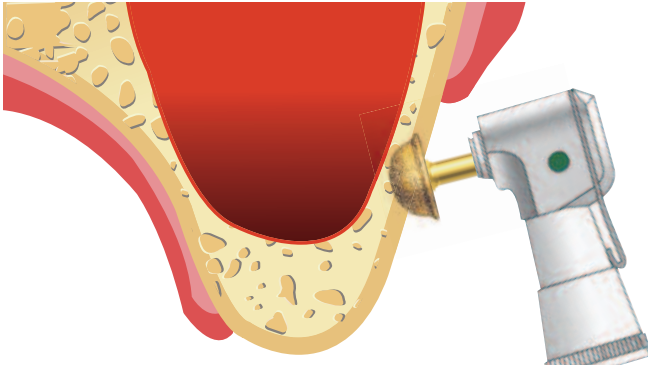
Graft material evenly distributed laterally with a sinus-curette



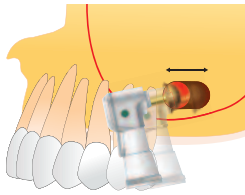
Implants (SuperLine) placed into the osteotomy

Lateral Approach (Sinus Elevation)

Thin-out Technique

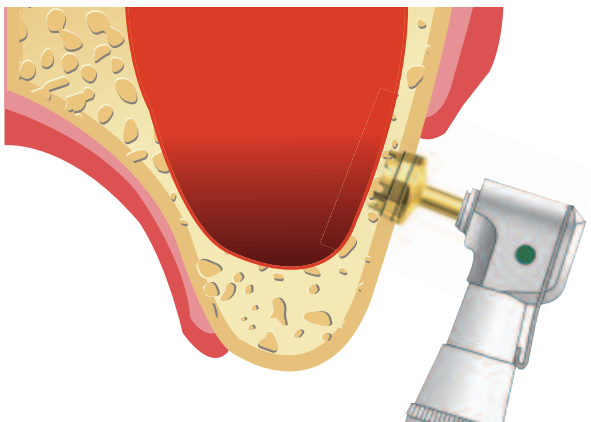


Thin down the lateral wall with **DASK Drill #4 or #5** at a 45 degree angle to reach the schneiderian membrane.

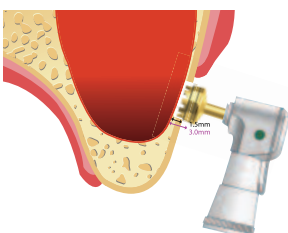


Move the **DASK Drill #4 or #5** mesio-distally with a gentle pressure until you get a proper size and shape of the window for bone augmentation.

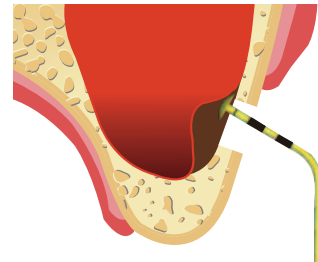
Wall-off Technique



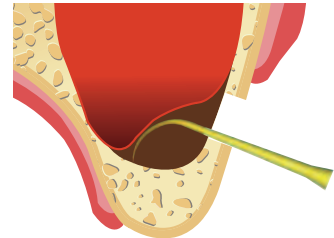
DASK Drill #6 is used to cut a round bony island from the lateral wall like a trephine bur. Start to drill at a desired location and proceed until you see the shadow of sinus membrane. Then separate and lift the bony island up from the neighboring wall with a molt curette or a periosteal elevator. The bony island is repositioned back in its original position after bone augmentation.



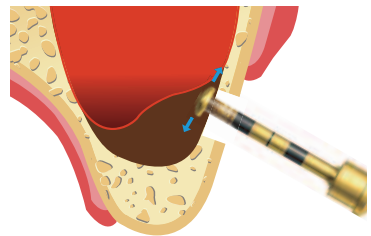
The first laser mark is 1.5mm and the second is 3.0mm. Overdrilling can cause sinus perforation and possible damage to the membrane.



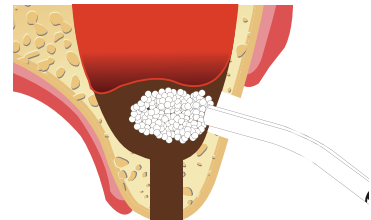
Detach sinus membrane using a dome-shape sinus curette.



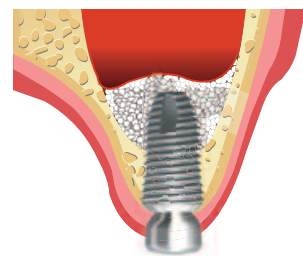
Elevate the sinus membrane to create adequate space for graft material.



After lifting the sinus membrane with a curette use **DASK Drill #3** to make hydraulic lift of the sinus.



Fill bone graft material (**OSTEON™ Sinus**) into the created space



Implant placed (**SuperLine**).

Clinical Case

Clinical Case 1 : Thin-out Technique



Preoperative panoramic view



Postoperative panoramic view



DASK Drill #4 for antrostomy approach onto the lateral wall of the maxilla.



A dome-shaped sinus curette is used first around the bony window for sinus membrane detachment



Implants placed with bone graft filling (OSTEON™ Sinus GBG0510)



Flaps closed

Clinical Case 2 : Wall-off Technique



Preoperative panoramic view



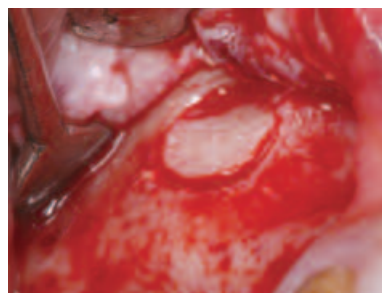
Postoperative panoramic view



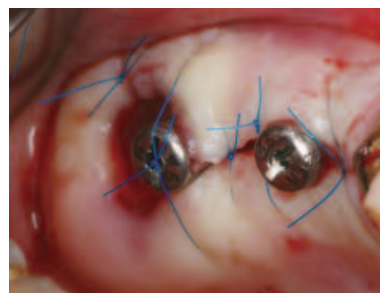
DASK Drill #6 to prepare a bony window



The maxillary sinus is opened via a lateral window



The bony island can be repositioned after bone augmentation

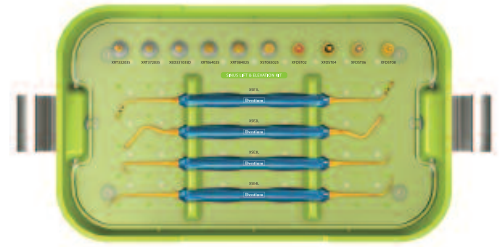


Flaps Closed

DASK (Dentium Advanced Sinus Kit)

DASK

- Simple & easy access to sinus cavity
- Broad exposure of bony walls with special instruments

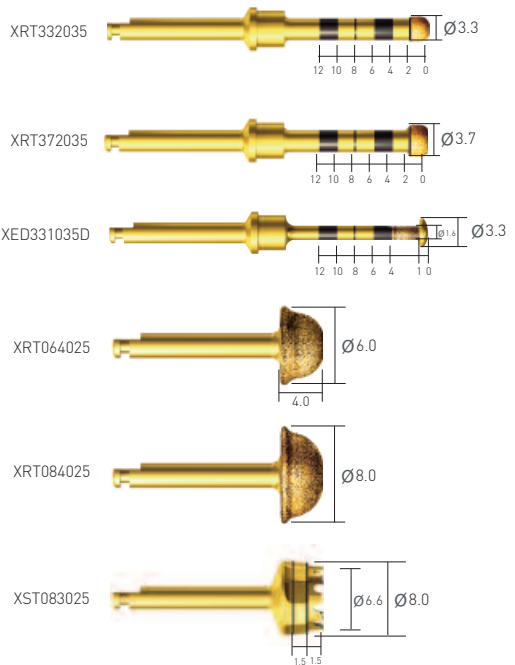


DASK Drill | Scale 1 : 1.2 / mm

Type	DASK Drill #	REF
Crestal Approach	DASK Drill #1	XRT 332035
	DASK Drill #2	XRT 372035
	DASK Drill #3	XED 331035D
Lateral Approach	DASK Drill #4	XRT 064025
	DASK Drill #5	XRT 084025
	DASK Drill #6	XST 083025

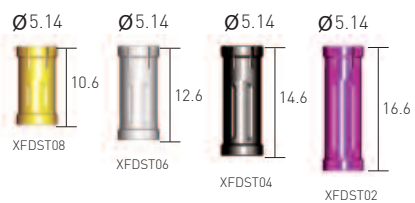
※ Note

DASK Drill #1-5 : Drill speed 800 to 1,200rpm, 30-45N.cm with internal irrigation
 DASK Drill #6: Drill speed 800 to 1,200rpm, 30-45N.cm with external irrigation



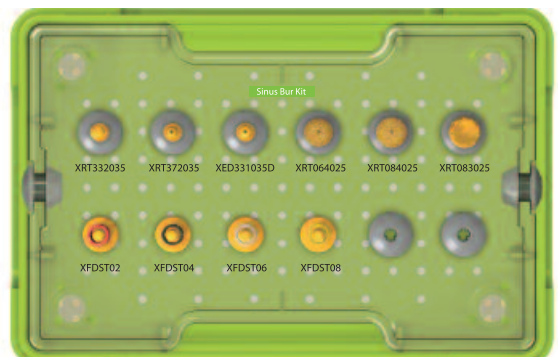
Stopper | For XRT332035, XRT372035, XED331035 | Scale 1 : 1 / mm

Drilling Depth	L	REF
08	10.6	XFDST 08
06	12.6	XFDST 06
04	14.6	XFDST 04
02	16.6	XFDST 02



Sinus Bur Kit

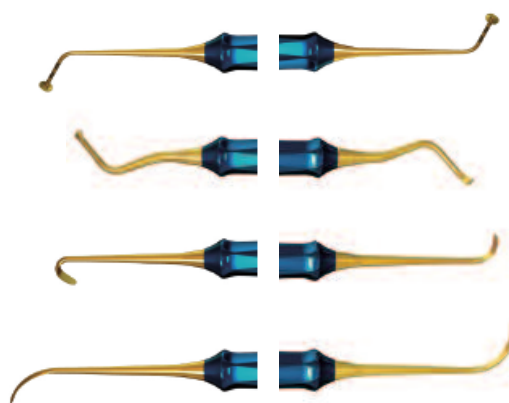
SDK



DASK (Dentium Advanced Sinus Kit)

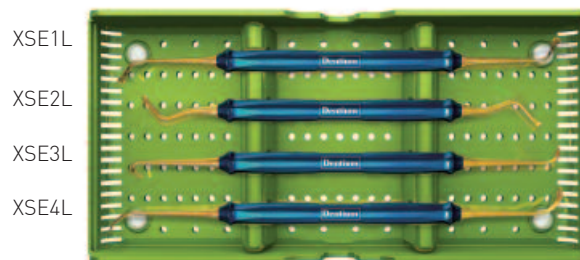
Sinus Elevation Instrument | Scale 1 : 0.6 / mm

REF	XSE1L
REF	XSE2L
REF	XSE3L
REF	XSE4L



Sinus Kit

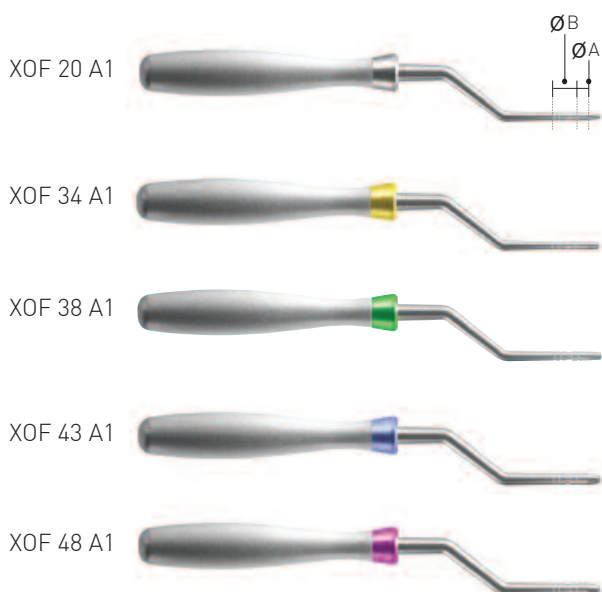
XSKL



Osteotome Kit

Osteotomes compress the bone laterally, providing denser bony interface rather than removing valuable bone from the surgical site.

Osteotomes | Final drill type / Scale 1 : 0.4 / mm



Type **A**
(Convex)



Type **B**
(Concave)

Type	Art. No.	ØA	ØB
XOFK A (Convex)	XOF 20 A1	Ø1.7	Ø2.8
	XOF 34 A1	Ø2.3	Ø2.8
	XOF 38 A1	Ø2.7	Ø3.2
	XOF 43 A1	Ø2.8	Ø3.8
	XOF 48 A1	Ø3.0	Ø4.3
XOFBK B (Concave)	XOF 20 B1	Ø1.7	Ø2.8
	XOF 34 B1	Ø2.3	Ø2.8
	XOF 38 B1	Ø2.7	Ø3.2
	XOF 43 B1	Ø2.8	Ø3.8
	XOF 48 B1	Ø3.0	Ø4.3

DASK Maintenance

Sterilization and Instrument Care Procedures

- Please follow legal regulations, as well as hygienic guidelines to prevent contamination and infection.
- Please remember that you are responsible for the maintenance and sterility of your medical/dental products/device. It is important to use and follow proper cleaning, disinfection and sterilization procedures.
- It is also important to follow the manufacturer's recommendation on usage of drills. Please keep a log as to how many times the drills are used.
- Drill usage is determined by surgical site not per patient. Bone density and usage determine the life of the drills.
- Drills should be considered for replacement around 15- 20 uses based on bone density. Check drills often for wear.

- 01** All instruments immediately after use must be pre-soaked for a few minutes in a germicidal bath to loosen and prevent debris from attaching to instruments. Do not soak over-night.
- 02** Scrub with a soft brush to remove any debris.
- 03** For internal irrigation drills, use a reamer or small gauge needle to cleanout drill internally.
- 04** Before using an ultrasonic cleaner, wrap drills in a 2 x 2 gauze to prevent rubbing against each other.
- 05** Rinse thoroughly with warm water.
- 06** Clean all instrument trays with a germicidal cleaner prior to replacing instruments in kit.
- 07** Dry completely and place back into kit.
- 08** Always check for damage or corrosion after rinsing and drying.
- 09** Seal the tray in a sterilization pouch.
- 10** Sterilize using a steam autoclave in 121°C/250F for 30 minutes or refer to manufacturer's recommendations.
- 11** Store in a dry area at room temperature.

Maintenance Period for DASK Drills

All surgical drills shall be replaced with new one after approximately 20 uses based on bone density

DASK Drill #1

{800 -1,200rpm, 30-45N.cm with internal irrigation}



DASK Drill #4

{800 -1,200rpm, 30-45N.cm with internal irrigation}



DASK Drill #2

{800 -1,200rpm, 30-45N.cm with internal irrigation}



DASK Drill #5

{800 -1,200rpm, 30-45N.cm with internal irrigation}



DASK Drill #3

{800 -1,200rpm, 30-45N.cm with internal irrigation}



DASK Drill #6

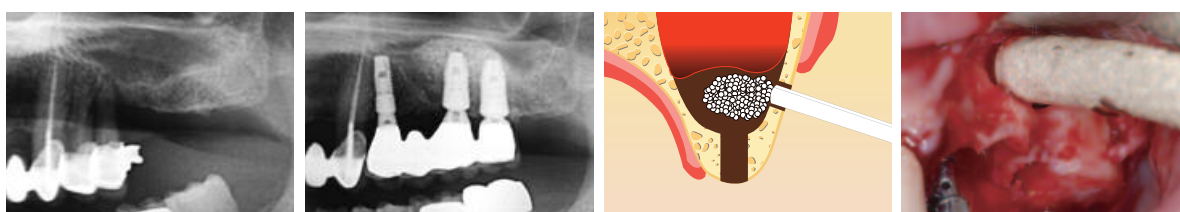
{800 -1,200rpm, 30-45N.cm with external irrigation}



OSTEON™ Sinus & Lifting

OSTEON™ Sinus

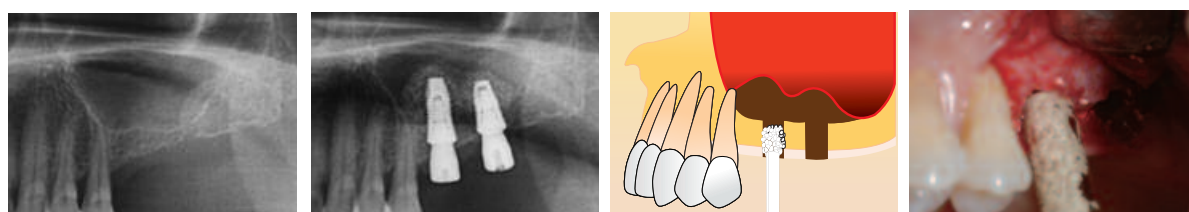
- For sinus augmentation via lateral approach
- Reduced time and more convenience with a special syringe
- HA coated with β - TCP: excellent osteoconductivity for new bone formation



Product	REF	Particle Size	Volume	O.D.	I.D.
OSTEON™ Sinus	GBG 0510SS	0.5~1.0mm	0.5cc	Ø7.0mm	Ø5.0mm
	GBG 1020SS	1.0~2.0mm			

OSTEON™ Lifting

- For sinus augmentation via crestal approach
- Much smaller particle size of OSTEON™ within a narrow diameter syringe fitted to the crestal approach



Product	REF	Particle Size	Volume	O.D.	I.D.
OSTEON™ Lifting	GBG 0305LS	0.3~0.5mm	0.25cc	Ø5.0mm	Ø3.4mm
	GBG 0510LS	0.5~1.0mm			

DASK

Dentium Advanced Sinus Kit

Distributed by

Dentium

For Dentists By Dentists Specifications are subject to change without prior notice.

DASK-1104 [Rev.1]

HEAD OFFICE

3105 Trade Tower 159, Samsung-dong, Gangnam-gu, Seoul, Korea (135-729) T +82-2-501-8560 F +82-2-567-9578

HOME PAGE

www.dentium.com