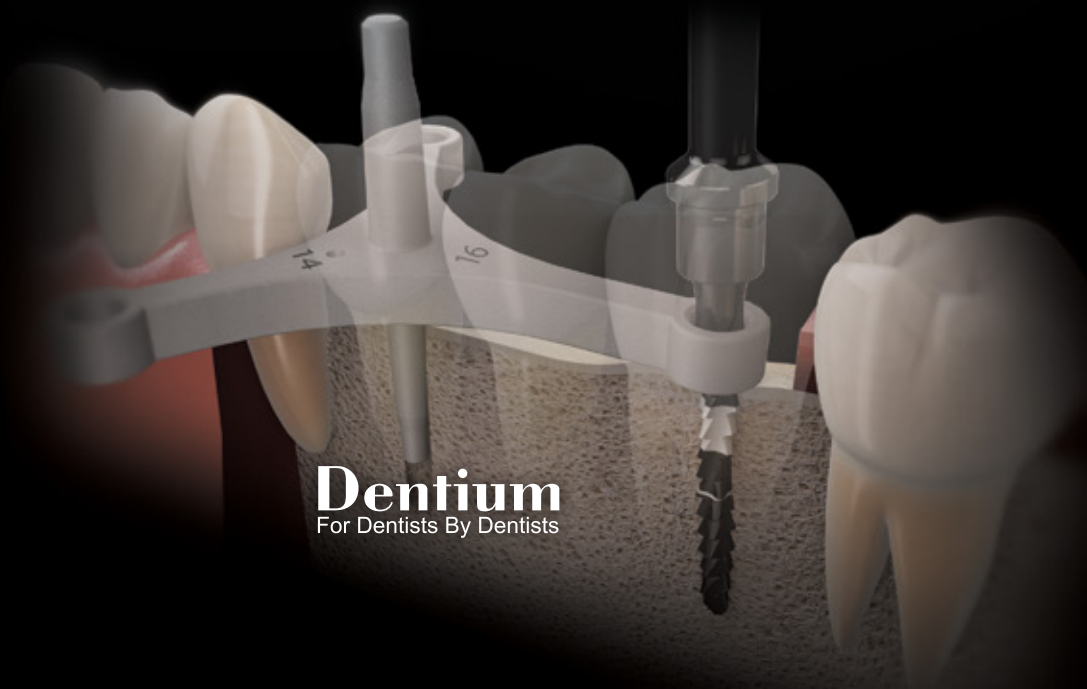


*Implant Surgery Supporters*

# Surgical Guide

*Product Catalog & Manual*



**Dentium**  
For Dentists By Dentists

## **Contents**

Polymer Guide	03
Implant Guide	05
Surgical Guide Manual	09

# Polymer Guide

## Thermo-Plastic template for dental implant installation

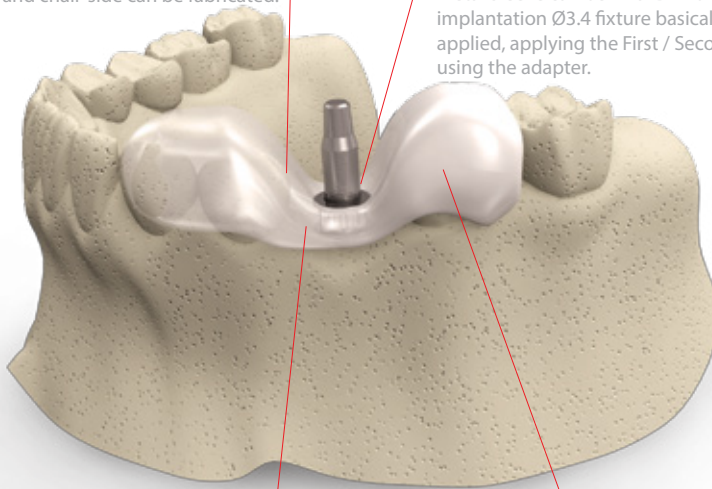
- Making precise surgical guide in minutes using hot water
- Disposable device improves infection control
- Titanium sleeve is compatible with guide drill and final drill

### Thermoplastic Guide Template

It is possible to manufacture an accurate surgical template in minutes simple and easy. Therefore, to reduce lab working time and chair-side can be fabricated.

### Fully Compatible with Dentium Drill System

Metal Sleeve can be Final Drill diameter for implantation  $\varnothing 3.4$  fixture basically has been applied, applying the First / Second Guide Drill using the adapter.



### Suitable Shape of Guide

Polymer Guide is designed to have a maximum contact area with adjacent teeth and to allow adequate field of view during implant surgery

### Improves Infection Control

Because it is a disposable instrument, Polymer guide is free to infection.



Drilling a hole in stone model



Insertion of Guide Pin



Making precise surgical guide in minutes using hot water More than 65°



Application of Polymer Guide in stone model



Removal of Guide Pin



Position the Polymer Guide in oral cavity and drilling with Final drill

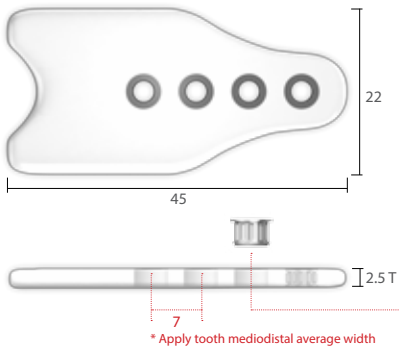
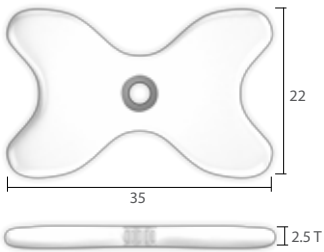




PGSSK



PGSK








### Single Standard (5ea)

T	Art. No.
2.5	XSG 34 35 S

### Cantilever Multi-Ready (5ea)

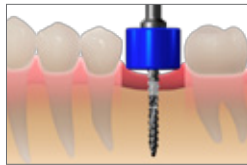
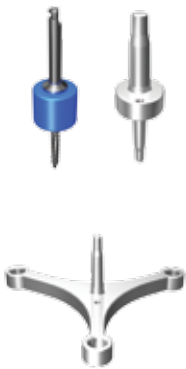
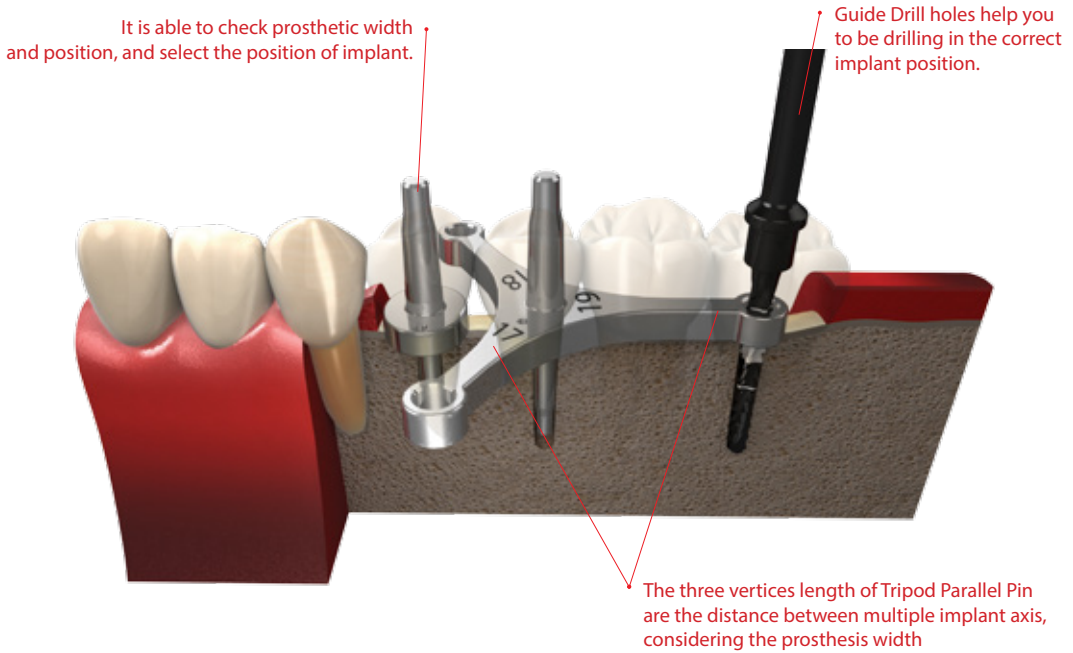
T	Art. No.
2.5	XSG 34 45 C

- Stone Drill  XGD 23 60 (5ea)
- Guide Pin  XGP 34 23 S (5ea)
- Guide Drill Bushing (First)  XPGB 19 26 (1ea)
- Guide Drill Bushing (Second)  XPGB 26 34 (1ea)
- Additional Metal Sleeve (for Cantilever Multi-Ready)  XPGS 34 25 A (5ea)

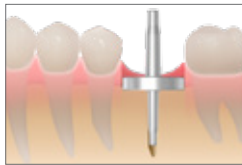
# Implant Guide

Surgical guide to using silicon spacer and unique parallel pin

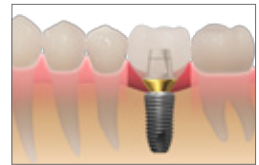
- Implant drill position guide which considers Mesiodistal width and position of the edentulous area
- Parallel pins and Spacers are configured to fit the average of tooth width



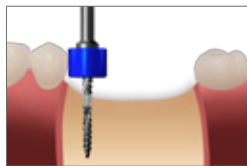
Spacer + Guide Drill



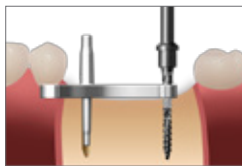
Ellipse Parallel Pin



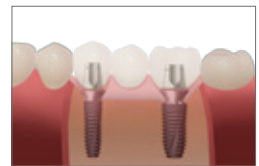
Final prosthesis



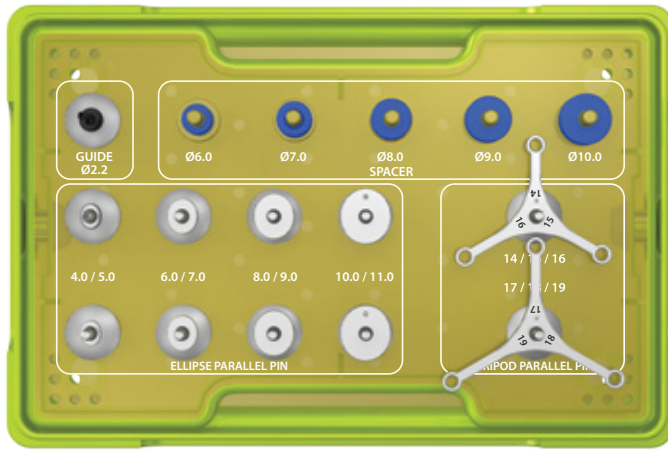
Spacer + Guide Drill



Tripod Parallel Pin



Final prosthesis



ISGK

## Kit Contents

· Guide drill



XLD 22 35S

· Spacer



XLDSP 60S



XLDSP 70S



XLDSP 80S



XLDSP 90S



XLDSP 01S

· Ellipse Parallel Pin (x2)



XPP 2226 50G



XPP 2226 70G



XPP 2226 90G



XPP 2226 11G

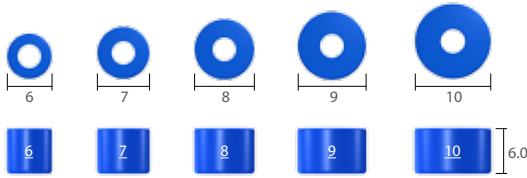
· Tripod Parallel Pin



XPP 2226 1416G

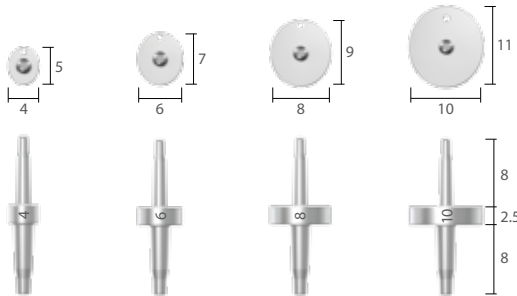


XPP 2226 1719G



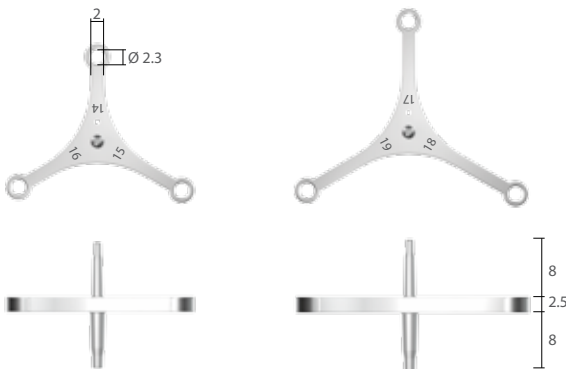
### Spacer

Diameter	Art. No.
Ø 6	XLDSP <b>60S</b>
Ø 7	XLDSP <b>70S</b>
Ø 8	XLDSP <b>80S</b>
Ø 9	XLDSP <b>90S</b>
Ø 10	XLDSP <b>01S</b>



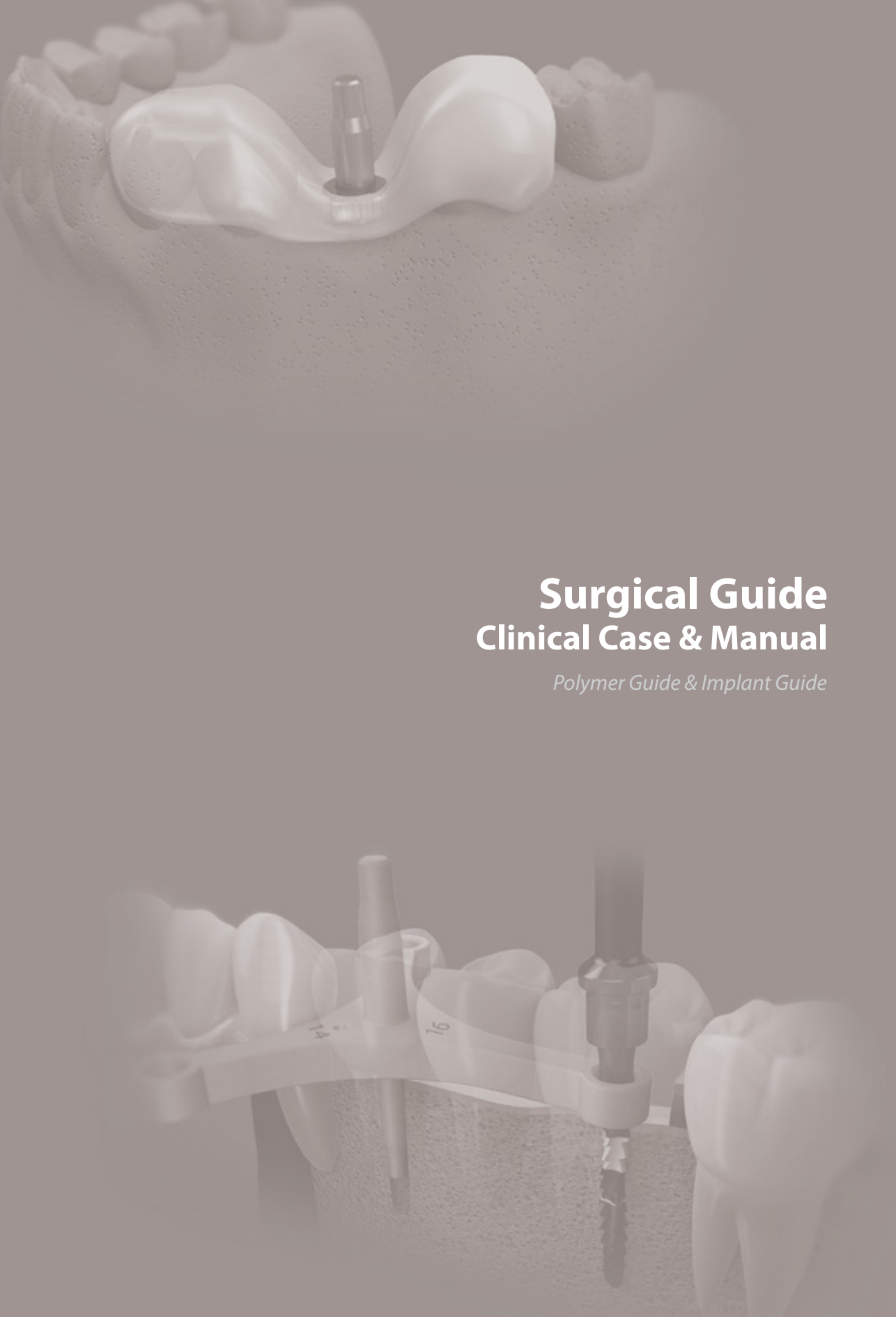
### Ellipse Parallel Pin

Diameter	Art. No.
Ø 4 / Ø 5	XPP 2226 <b>50G</b>
Ø 6 / Ø 7	XPP 2226 <b>70G</b>
Ø 8 / Ø 9	XPP 2226 <b>90G</b>
Ø 10 / Ø 11	XPP 2226 <b>11G</b>



### Tripod Parallel Pin

Width	Art. No.
14 / 15 / 16	XPP 2226 <b>1416G</b>
17 / 18 / 19	XPP 2226 <b>1719G</b>



# Surgical Guide Clinical Case & Manual

*Polymer Guide & Implant Guide*



# Polymer Guide

Case1\_ Polymer Guide + SuperLine + OSTEON™ II Collagen



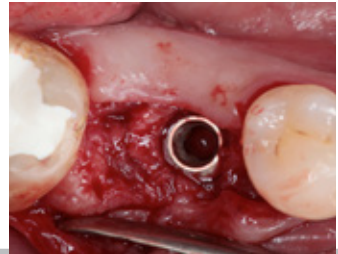
Pre-op



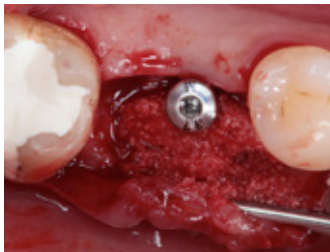
Application of Polymer Guide  
Single Standard



Drilling  
Harvest Drill



implantation  
SuperLine 7008 SE



Application of graft material  
OSTEON™ II Collagen

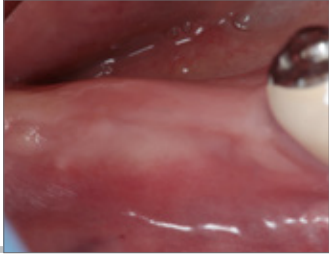
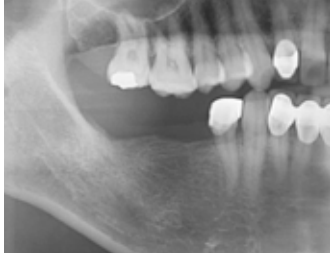


2weeks healing



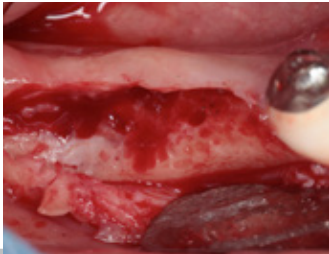
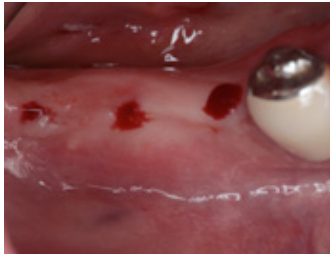
Post-op

**Case2\_ Polymer Guide + SuperLine + OSTEON™ II Collagen**



Pre-op

Application of Polymer Guide  
Cantilever Multi-Ready



Drilling

Parallel Pin



2 weeks healing



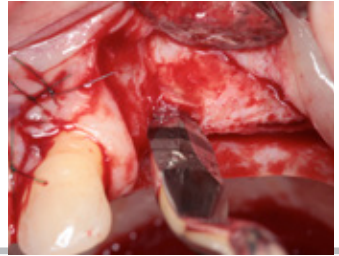
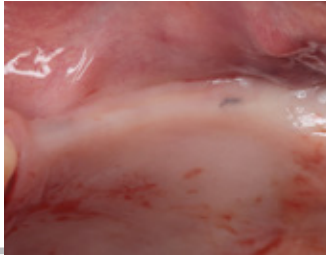
Post-op



6 months healing and temporary

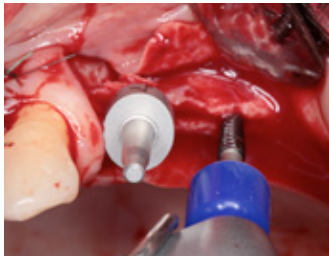
# Implant Guide

Case1\_ RS Kit + Implant Guide + NR Line + Sinus Elevator + OSTEON™ II

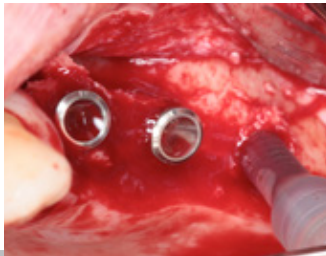


Pre-op

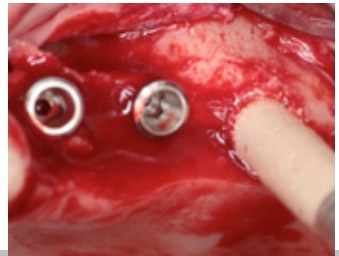
Expansion with Bone Chisel



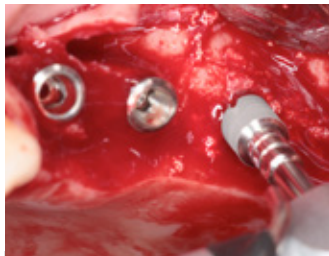
**Expansion with Implant Guide**  
Expanding alveolar bone ridge to make Space for fixture



**Implantation & Sinus elevation**  
NR Line 3011W & Sinus elevator



**Application of graft material**  
OSTEON™ II Lifting



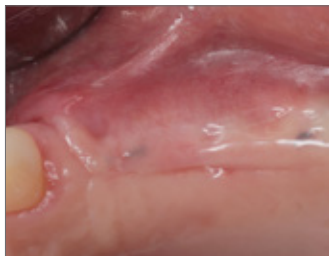
**Implantation**  
NR Line 4309S



**Application of graft material**  
OSTEON™ II



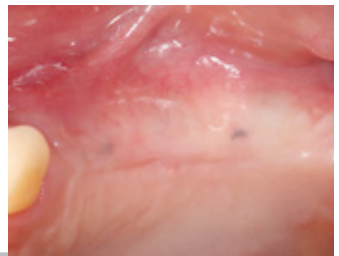
**Barrier membrane application**  
Collagen Membrane



5 weeks healing

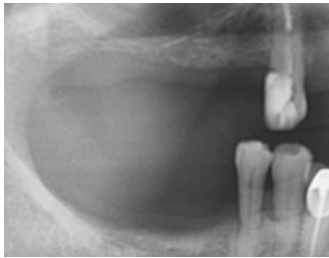


Post-op

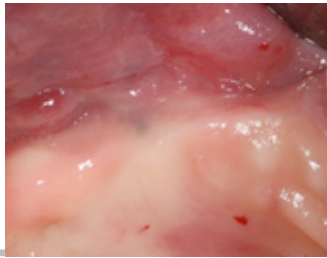


4 months healing

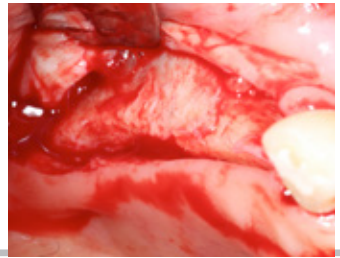
**Case2\_ Implant Guide + NR Line + OSTEON™ II + OSTEON™ II Collagen**



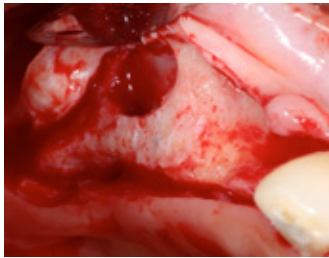
Pre-op



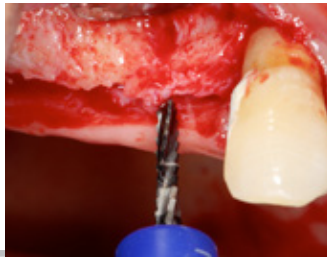
Pre-op



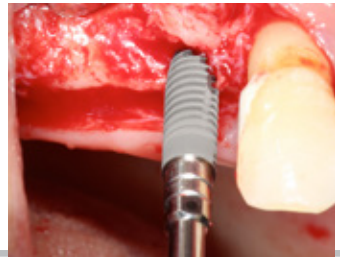
Incision



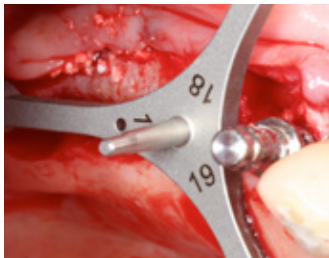
The maxillary sinus is opened via a lateral window



Guide drilling after connecting the spacer with the Guide drill



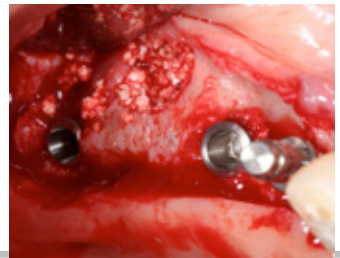
Fixture Installation  
NR Line



Placement of Tripod Parallel Pin



Guide drilling using the Tripod Parallel Pin



Implants place with bone graft filling  
OSTEON™ II



Bone graft using OSTEON™ II Collagen



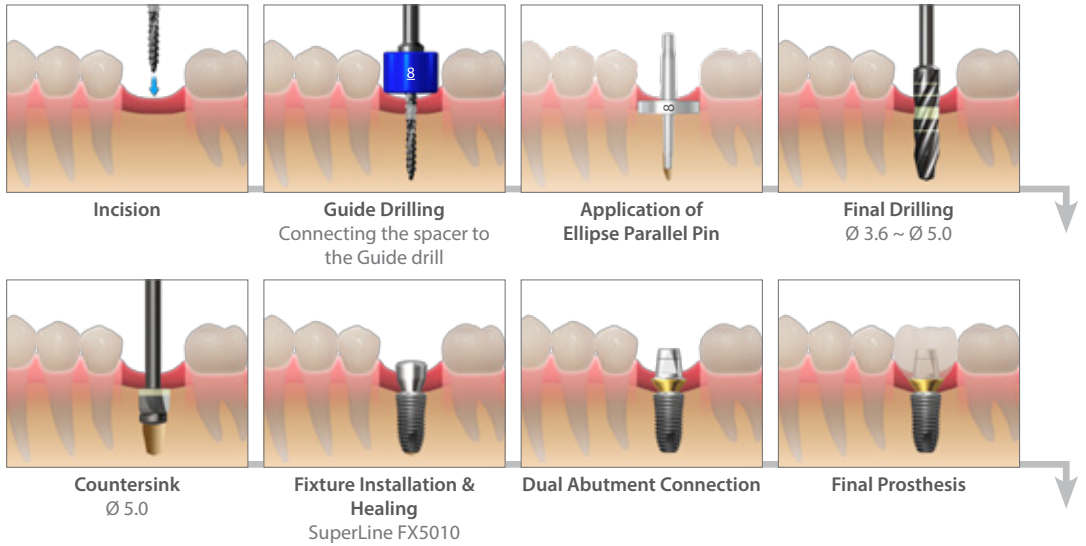
2 weeks healing



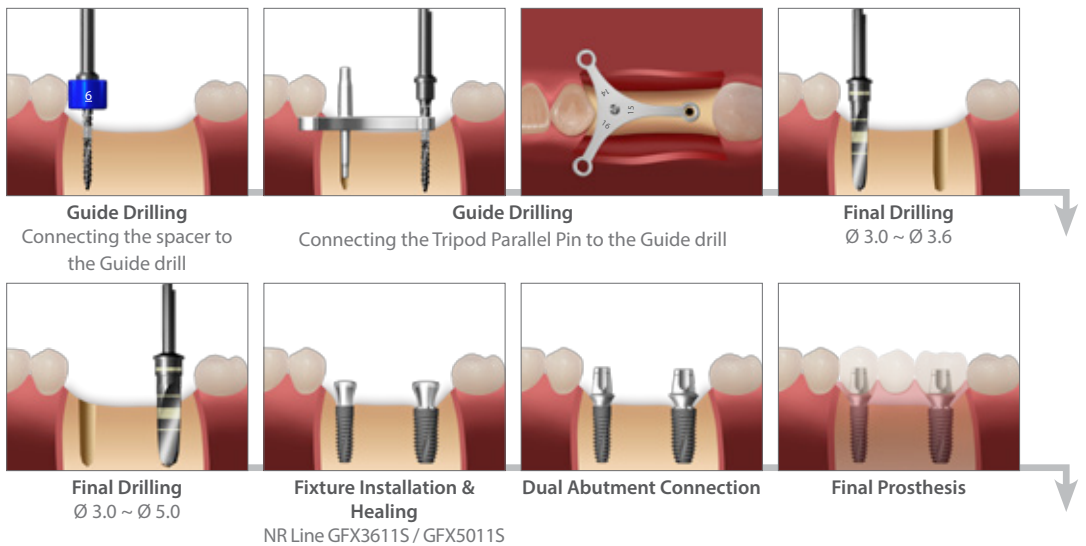
Post-op

## Case3\_ Ellipse & Tripod parallel pin manual

### Single Case



### Multiple Case



**Dentium**  
For Dentists By Dentists

# Surgical Guide

Product Catalog & Manual

**Dentium**  
For Dentists By Dentists

Specifications are subject to change without prior notice.  
Some products that are to be launched in the market after necessary approvals are also listed in this catalog.

---

**HEAD OFFICE**

3105 Trade Tower, 513 Yeongdong-daero, Gangnam-gu, Seoul, Korea 135-731 T +82-2-501-8560 F +82-2-567-9578

**HOMEPAGE**

[www.dentium.com](http://www.dentium.com)

SGCM-1312 [Rev.1]